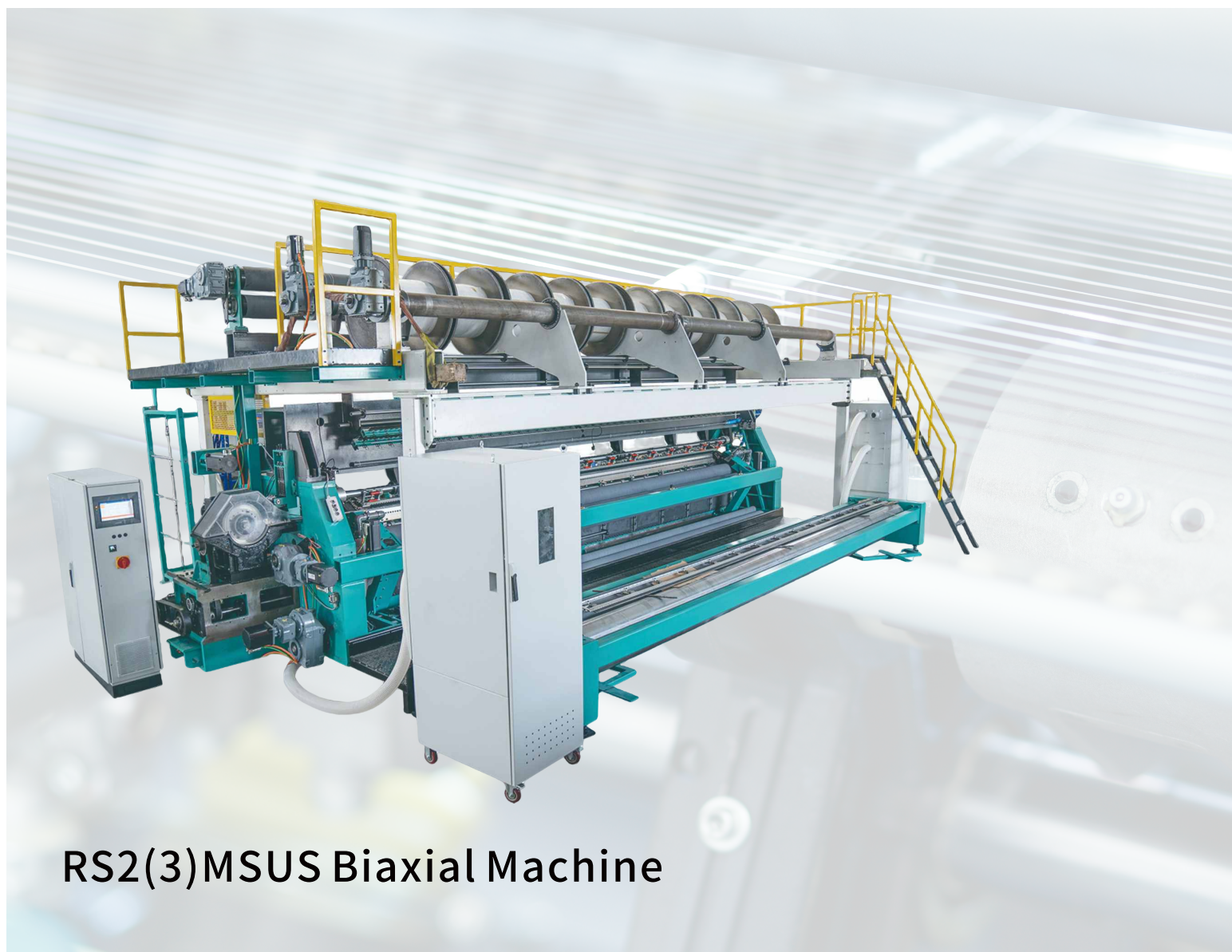




A-ZEN

Weft-insertion Warp Knitting Machine

双轴向经编机



RS2(3)MSUS Biaxial Machine





公司介绍/ About Us

常州亚禅纺织科技有限公司位于江苏常州,是一家专业的经编机和经编技术解决方案提供商。迄今为止,亚禅纺科已经为市场提供了多款经编机,包括拉舍尔花边机、双针床拉舍尔经编机、双轴向经编机、经编毛巾机、特里科经编机以及整经机。

自2020年起,亚禅纺科在土耳其、印度、巴基斯坦、埃及、伊朗等地建立了本地技术服务团队,实现了“及时、高效、专业”的售后服务体系。

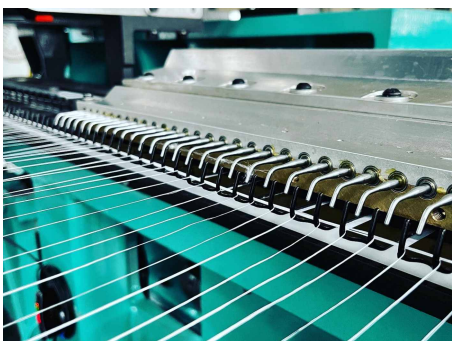
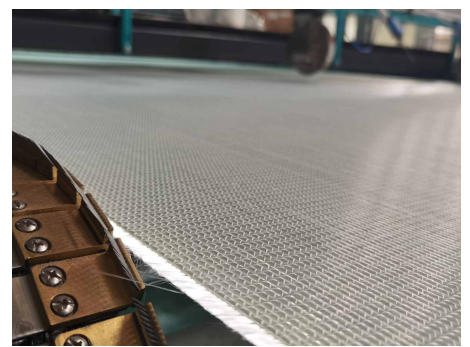
以负责任的经营、不断的创新、开放的合作为动力,亚禅纺科正成为更专业、更值得信赖的经编机械供应商。

CHANGZHOU A-ZEN TEXTILE TECHNOLOGY CO., LTD is warp knitting machines and technology solutions provider, which locates in Changzhou, China.

To date, A-ZEN has already provided plenty of warp knitting machines in the market, including raschel lace machines, double-needle bar raschel machines, biaxial machines, terry machines, and tricot machines.

Since 2020, Changzhou A-ZEN has established local technical service teams in Türkiye, India, Pakistan, Egypt and Iran, thus realizing a "timely, efficient and professional" after-sales service system.

Driven by responsible operation, ongoing innovation, and open collaboration, Changzhou A-ZEN is becoming a more professional and reliable supplier of warp knitting machinery.



产品介绍/About RS2(3)MSUS

RS2(3)MSUS型拉舍尔衬纬经编机是指带有纬纱导纱器的高速拉舍尔型经编机。

拉舍尔双轴向织物可以使用玻璃纤维纱或其他重质材料,该织物广泛用于土工格栅、玻璃纤维纺织品、灯箱广告布、家居窗帘和服装面料等经编织物。

Raschel weft-insertion warp knitting machine RS2(3)MSUS refers to the high-speed raschel machine with the weft-insertion carrier which makes in-lay structure by carrying parallel yarns move horizontally.

Raschel biaxial fabrics could use fiberglass yarn or other heavy material, and the fabrics are widely used as geogrid, glass fiber textile, flex banner, home curtains, and outwears.

主要技术参数/Main Technical Specification

工作门幅/Working Width	138", 213", 245", 268";
机号/Gauge	E6, E9, E18, E24;
工作转速/Working Speed	50-1,300 rpm (视具体布面而定/depends on textile specification)
针型/Needle Elements	尖头槽针/Pointed Compound Needles
提花机构/Pattern Drive System	花盘N型横移机构/Pattern Disc Drive;
梳栉/Guide Bars	2把地梳直径Φ30", 1把衬纬梳最大盘头直径Φ40" 2 Ground Bars with Φ30", and 1 ST Bar Max. Φ40" size beam.
铺纬机构Weft-insertion System	30头衬纬纱, 门幅可调 30 weft hooks weft-carrier with adjustable working width.
送经机构/Yarn Let-off	电子送经/Electronic Yarn Let-off
牵拉机构/Fabric Take-up	电子牵拉/Electronic Take-up
卷取机构/Batching Device	摩擦式卷取, 最大直径为1000毫米 Friction surface winding Max. 1000mm
电气设备/Electrical System	380V工业电压, 50Hz, 总负载35kVA 380V, 50Hz, total connected load 35kVA

产品特点/Main Features

- 稳定的工作性能, 生产效率进一步得到优化;
Stable working performance, further optimized production efficiency;

- 多重选配装置, 适合不同的应用领域;
Multiple optional devices, suitable for different application fields;

- 铺纬装置由高精度伺服驱动, 一致性高, 铺纬更准确;
Weft-insertion system driven by high-precision servo system, higher consistency, and more accuracy.

- 敏捷的人机界面, 操作更便捷;
Agile HMI interface, more convenient operation;



We're Satisfied with Your Satisfaction.



CHANGZHOU A-ZEN TEXTILE TECHNOLOGY CO.,LTD

E-mail: info@azentex.com

Website: www.azentex.com